

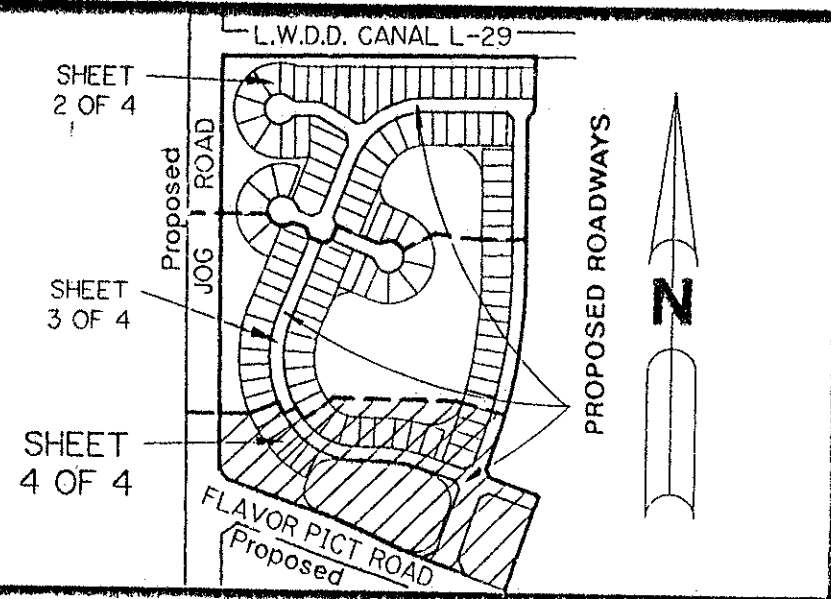
PLAT OF CORAL LAKES III

BEING A REPLAT OF A PORTION OF TRACT "A"
OF THE PLAT OF CORAL LAKES AS RECORDED IN PLAT BOOK 67, PAGES 197-198
LYING IN SECTION 3, TOWNSHIP 46 SOUTH, RANGE 42 EAST,
PALM BEACH COUNTY, FLORIDA

0614003

153

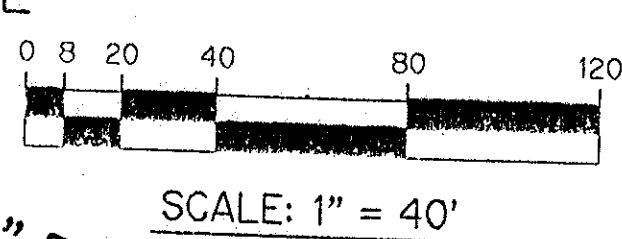
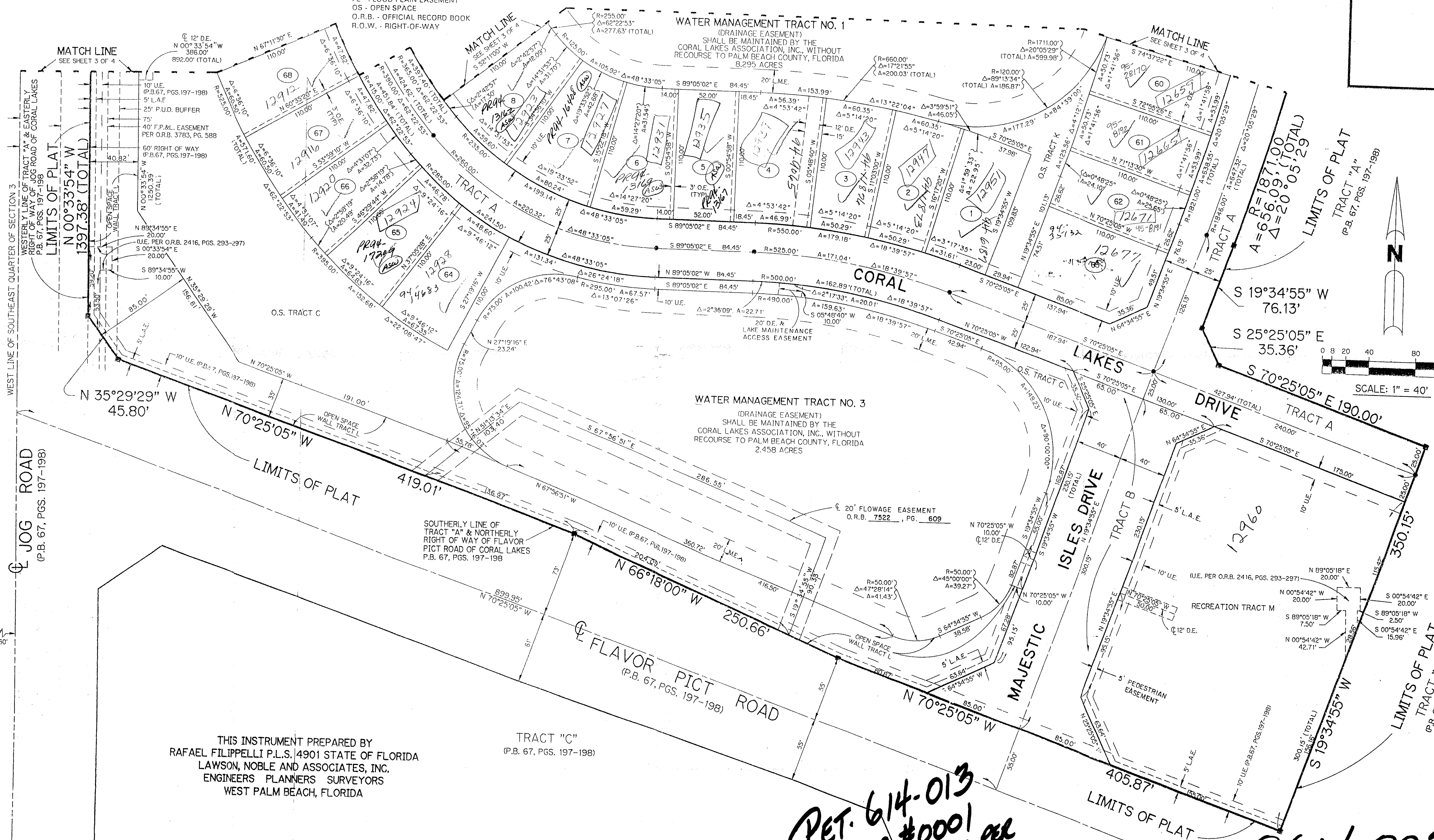
JANUARY, 1993 SHEET 4 OF 4



LEGEND

- L.A.E. - LIMITED ACCESS EASEMENT
- R - RADIUS
- Δ - DELTA ANGLE
- P.B. - PLAT BOOK
- P.G.S. - PAGES
- O.R. - OFFICIAL RECORD
- P.U.D. - PLANNED UNIT DEVELOPMENT
- P.L.S. - PROFESSIONAL LAND SURVEYOR
- N.R. - NOT RADIAL
- N - SURVEY TIE LINE
- - PERMANENT REFERENCE MONUMENT, PLS #4901
- - PERMANENT CONTROL POINT, PLS #4901
- O.E. - OVERHANG EASEMENT
- U.E. - UTILITY EASEMENT
- D.E. - DRAINAGE EASEMENT
- FPL - FLORIDA POWER AND LIGHT COMPANY
- FE - FLOOD PLAIN EASEMENT
- OS - OPEN SPACE
- O.R.B. - OFFICIAL RECORD BOOK
- R.O.W. - RIGHT-OF-WAY

KEY MAP
N.T.S.



SECTION 3 OF CORAL LAKES III
BOOK 71 PAGE 150
FLOOD ZONE B FLOOD MAP # 200A
QUAD # 36 ZONING AR
BE NPN ZIP CODE 33457
SUB NAME CORAL LAKES

THIS INSTRUMENT PREPARED BY
RAFAEL FILIPPELLI P.L.S. 4901 STATE OF FLORIDA
LAWSON, NOBLE AND ASSOCIATES, INC.
ENGINEERS PLANNERS SURVEYORS
WEST PALM BEACH, FLORIDA

TRACT "C"
(P.B. 67, PGS. 197-198)

PET. 614-013
ALLOC. #0001
+ No. SCHOOLS PER
J.B. MEMO 4/1/94
CORAL LAKES III

0614-003

71/153